

# Installing and Using a Signature Capture Pad.

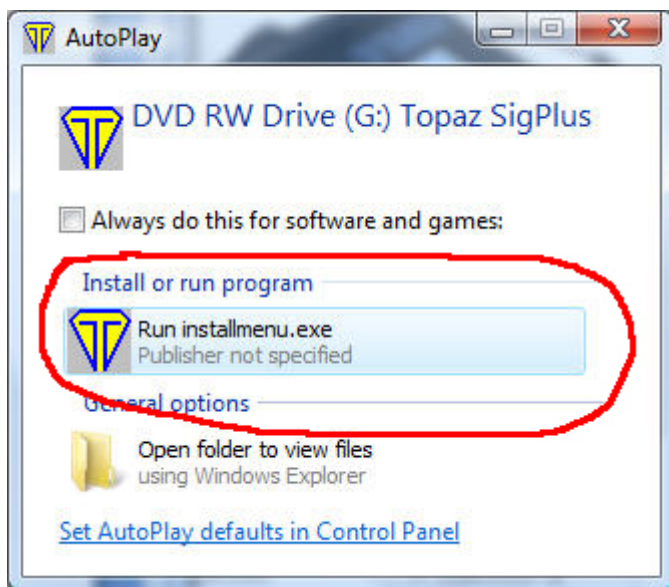
We currently support the Topaz single line signature pad models: L462-HSB (non-backlit) and the T-LBK462-HSB-R (with back lighting)



By using a signature capture pad, when you do a customer sale using a credit card, their signature is captured as a file and preserved along with the invoice.

## Setting Up The Signature Pad.

After receiving your signature pad, there will be a software CD included with it. Insert the CD into your drive and follow the screens as shown below.



**DO NOT INSERT THE PAD'S CABLE INTO YOUR USB PORT UNTIL TOLD BY THE INSTALL ROUTINE**

Topaz Systems SigPlus eSignature Installation

**SigPlus®** ActiveX

Software for the capture, encryption, and forensic authentication of electronic signatures

*US Patent 6,307,955 and patents pending*

**TOPAZ**  
SYSTEMS INC.  
©2007 Topaz Systems, Inc.

Install SigPlus eSignatures (must be installed first)

Install MS Office Plug-ins for Word/Excel (optional)

Install Plug-in for Adobe Acrobat Standard/Professional (optional)

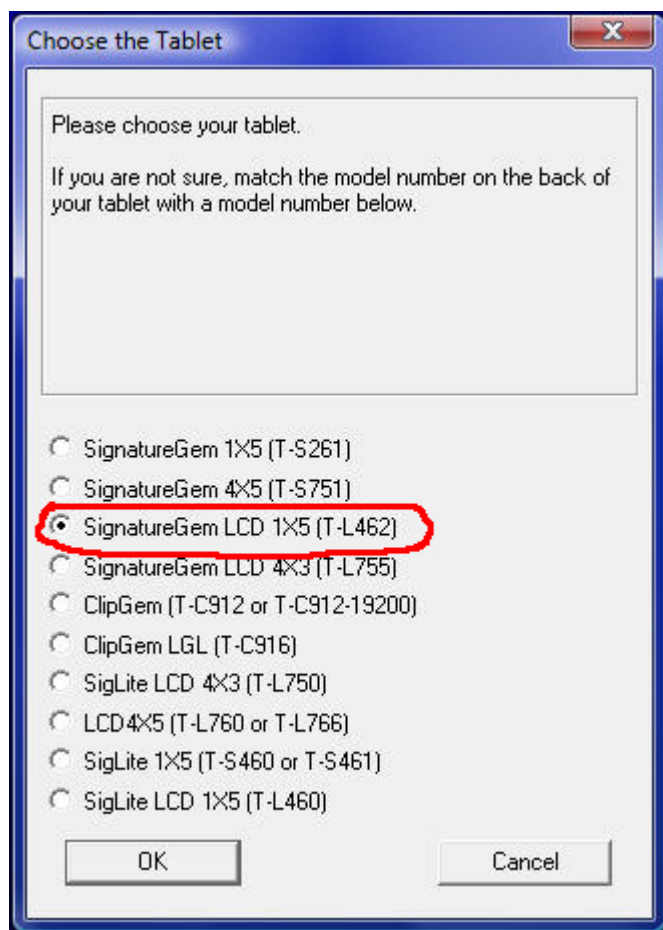
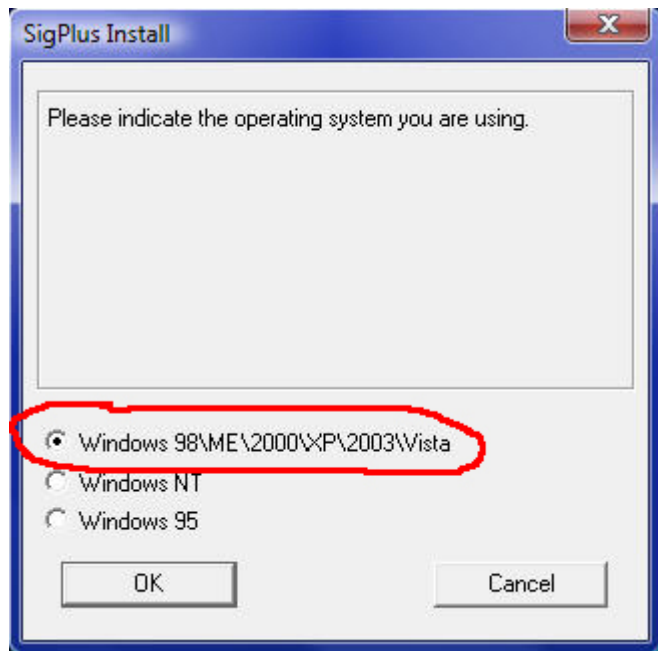
Install SigTool Imager (signature BMP, TIF, JPG) (optional)

Cancel

Currently-supported development environments and interfaces

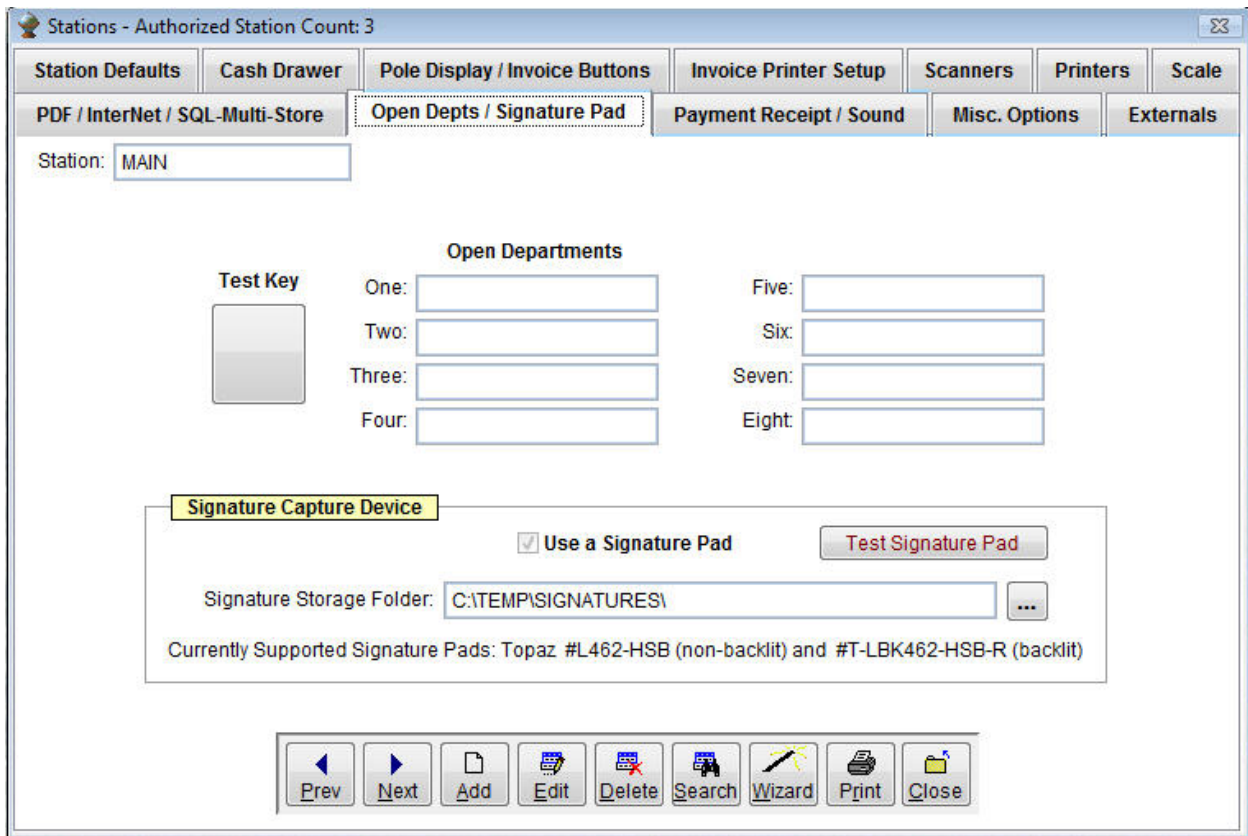
Since the Rocket POS will ONLY run on the Operating Systems shown below, check the top line.

**If you do NOT have the above install software, contact your dealer or Rocket POS for a copy.**



Once the above software has installed, your system should be re-booted.

## Configuring the POS for the Signature Pad



New fields have been added to the Stations Screen for support of the Signature Pad. We suggest creating a folder to hold the signature files when created.

You may test the signature pad by clicking the Test Signature Pad button above.

There are three (3) critical files that must be in the Nickel folder for the Signature Pad to operate correctly.

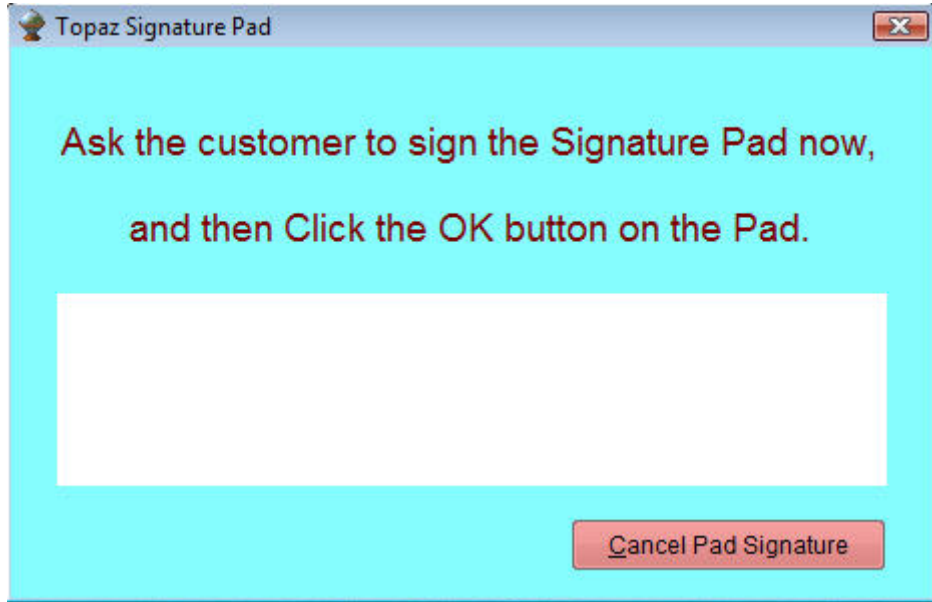
**OK.bmp, Sign.bmp and Clear.bmp – These files are used to show features on the Signature pad. If you DO NOT have copies of these files, they are available on our website at [ROCKETPOS.com](http://ROCKETPOS.com)**

The below screen will open for the testing as well as the signatures of your customers during credit card sales. The below screen will ONLY open after an approval of the credit card.

You will be able to see the customer's signature as they are signing. If you or the customer cancels the electronic signature, make sure the customer signs the receipt as normal.

The signatures will ONLY show up on a receipt or invoice using a windows printer driver and NOT the generic text printer driver.

Reprinted invoices and receipts will also show any electronic captured signatures.



If you use the backup routine built into the POS, make sure to make copies of your signatures folder since it does NOT get included into the backup file.