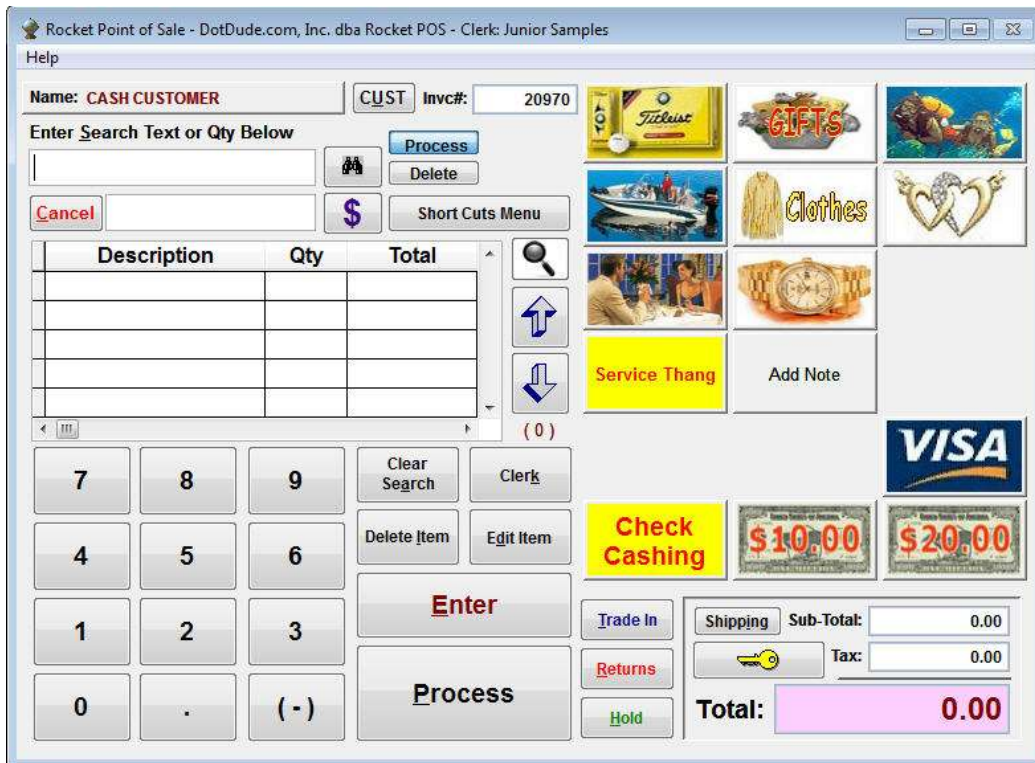
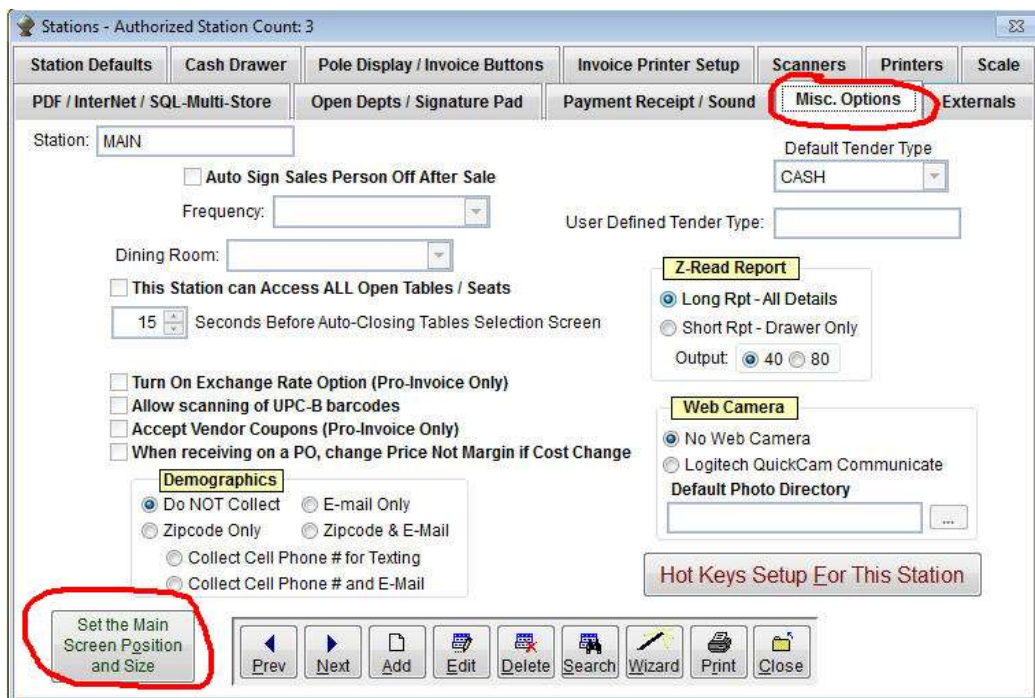


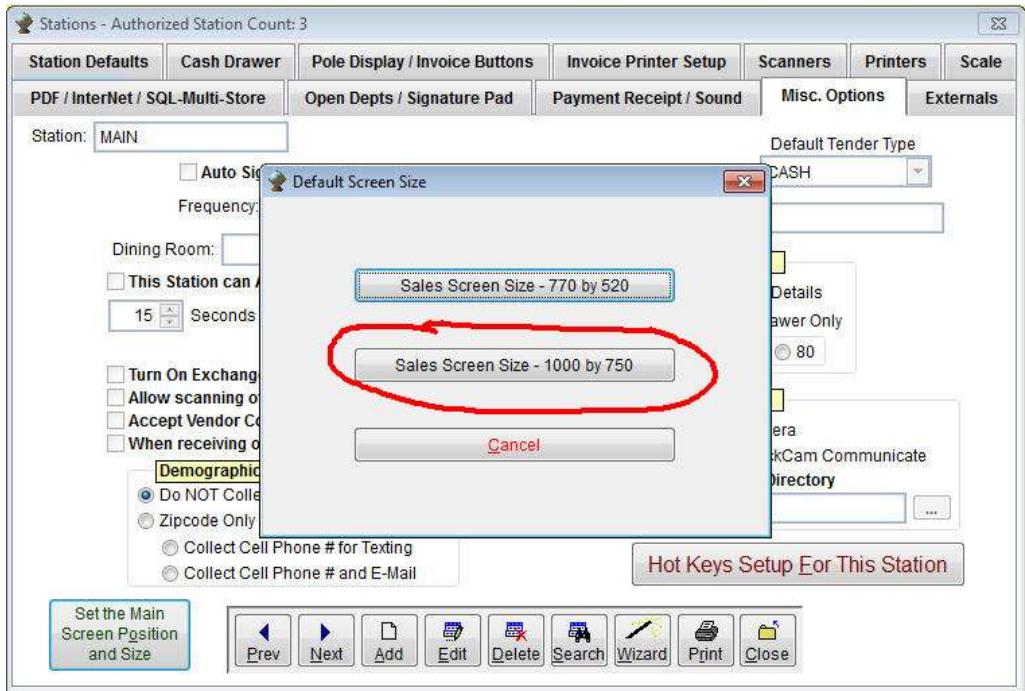
New Larger Invoicing Screen – Version 12



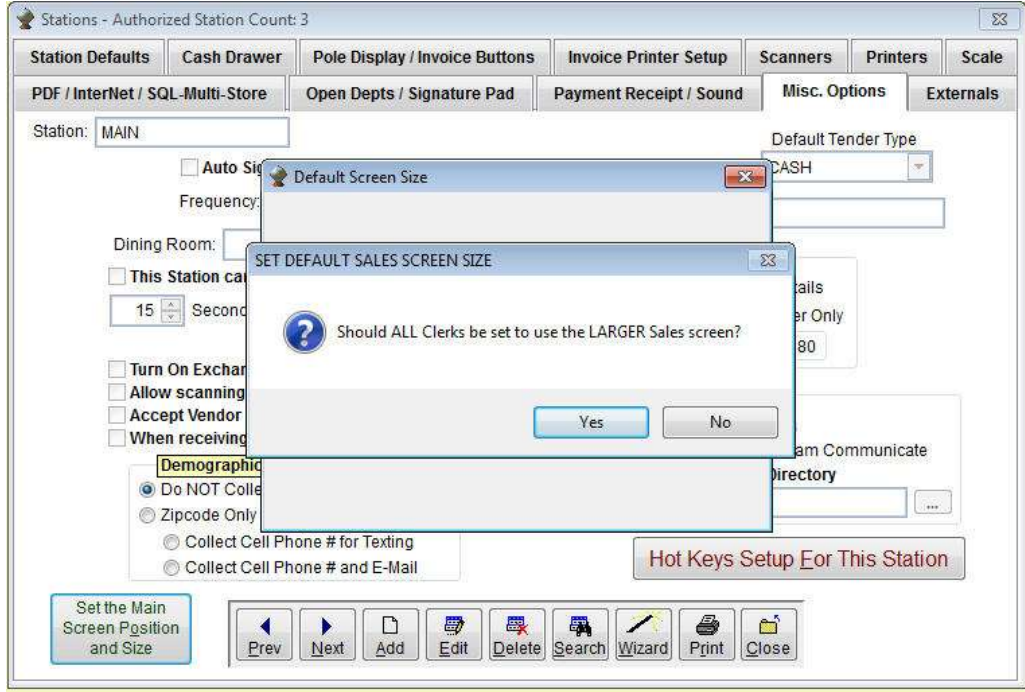
Above is the standard size invoicing screen you are used to using.



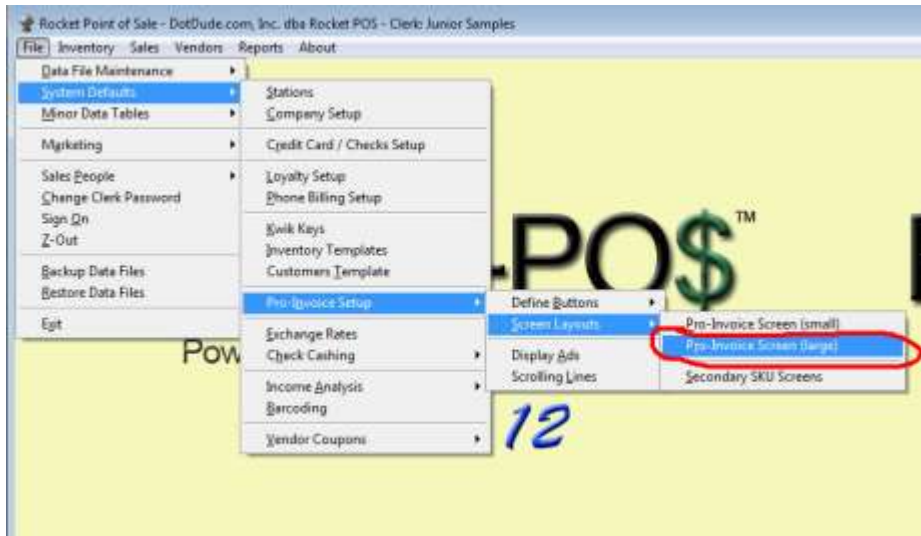
Go to Stations and click on the circled button above.



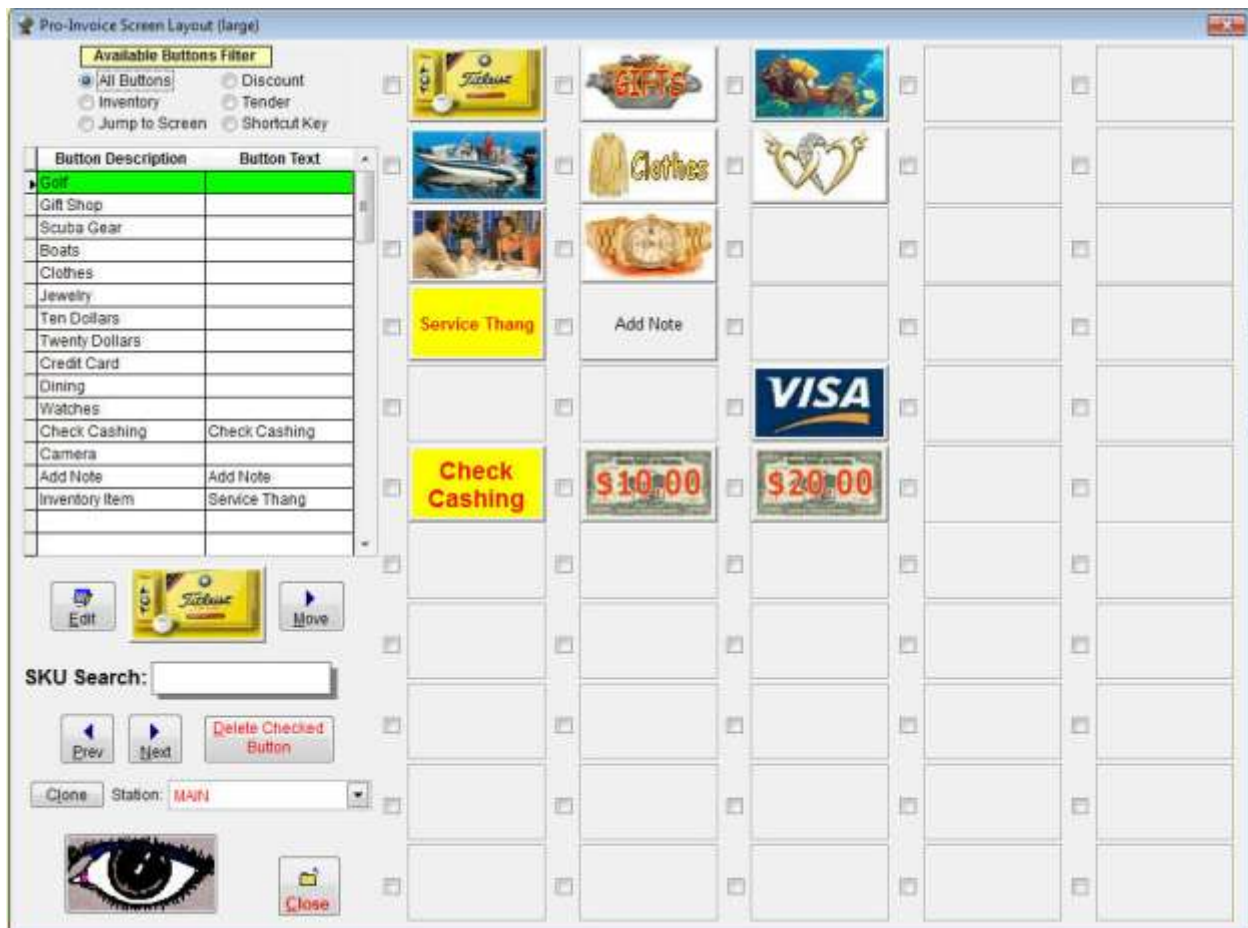
Then select the larger invoicing screen size



You have an option to decide if all clerks should use the larger size. This allows you to setup buttons for one clerk you may not want another clerk to have access to.



To setup your buttons, use the menu options shown above. The screen shot below **is NOT TO SCALE**, all existing buttons will appear but as you can see, many more buttons can now be added. This screen works great on larger monitors and especially great on large touch screen monitors.



Note, only a few buttons are setup – we are just showing the layout for reference above.